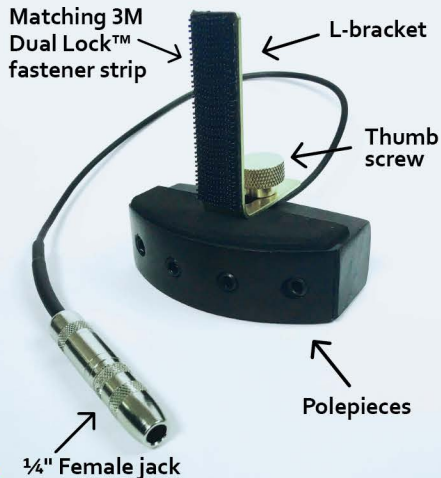


KRIVO PICK - UPS

Thank you for purchasing a KRIVO Pickup for upright bass. To install your new pickup, please carefully follow these instructions:

KRIVO Bass Pickup 2020



1

First, apply the included 3M Dual Lock™ fastener strip¹ to the back center of your fingerboard (as shown by the yellow dotted-outlined location) and let dry thoroughly for several hours.



2

Firmly press the Matching 3M Dual Lock™ fastener strip (on the front of your pickup's brass L-bracket) to the strip you applied on the back of the fingerboard in step 1. The fastener should "snap" securely into place.



3

Slightly loosen the brass thumb screw on the pickup so you can easily move the pickup backwards or forwards into alignment with the strings. Align the polepieces so that they are directly underneath the corresponding strings. The pickup should be as close to the strings as possible, but not so close as to touch the strings or to interfere when playing in higher positions. At no point should the pickup or polepieces hit the strings; an unpleasant noise may result! Too much distance from the strings will result in insufficient output.



4

Once the pickup is properly aligned, tighten the brass thumb screw securely so that the pickup stays firmly in place.

5

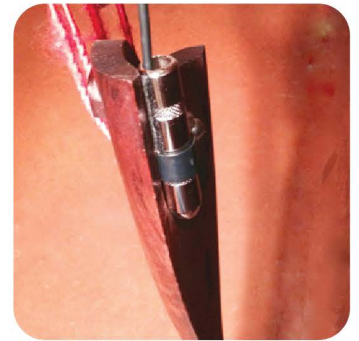
Remove the G string from your bass and thread it through the included cable clip.



¹ Please note: The 3M "Dual Lock" fastener strips are **NOT** Velcro™—unlike regular velcro, they have the same texture on both sides and the bond is much stronger than traditional "hook and loop" Velcro.

6

Re-attach the G string and tighten it to pitch with the clip now holding the jack securely into place as in the photo at right. When tightened the string will then hold the clip and ¼" inch audio jack in place and the jack should now slip easily in and out of the clip. With the pickup in place, slide the ¼" female jack into the cable clip. To avoid noise and rattling make sure that any loose cable does not rest against the body of your bass or strings.

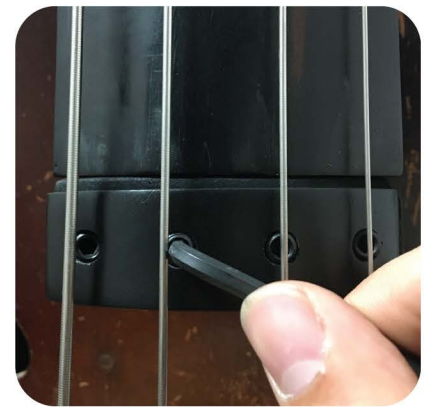


7

Plug the cable from your amplifier into the ¼" female jack on your bass and you are ready to make music.

8

Lastly, you may decide to finely adjust the height of your pickup's polepieces for perfect string-to-string balance. Use the included Hex Wrench to loosen a polepiece to bring it closer to string, which will make that particular string louder. Conversely, you may tighten a polepiece to decrease the volume of a particular string by moving the polepiece farther away from a string.



Please test out your pickup thoroughly—all sales are final 15 days after you receive your pickup.

Comments or Questions?


email: krivopickups@gmail.com

Pickups for guitar & other instruments:

www.krivopickups.com

Post your KRIVO Pickup photos!

 www.facebook.com/KrivoPickups/

 [@krivo_pickups](https://www.instagram.com/krivo_pickups)
[#krivopickups](https://www.instagram.com/krivopickups)

KRIVO 
PICK - UPS